

Community Advisory Group

Meeting #20 – 28 June 2023

We acknowledge the Gunaikurnai people as the traditional custodians of the land and pay respect to their elders past and present

Agenda

1. Welcome
2. Standing items and actions
 - Apologies
 - Welcome new CAG Member
 - Minutes and action items
 - CAG 'Terms of Reference' amendment
 - Declaration of potential conflicts
3. What's happening on the project
4. GLaWAC – Renewable Energy Strategy
5. What's happening in the community
 - All (15 min)
6. Break (10 min)
7. Focus topic: Earliest possible delivery timeline
8. Other business
 - Other questions or feedback
 - Suggestions for future agenda items
 - Next meeting – Port Welshpool Coast Guard, Thursday 24 August.
9. Meeting close

What's been happening

- **Seabed studies** completed May 2023.
 - 50 people working offshore for 30 days
 - Collecting a combined 1.2 km of ground samples from 22 locations
 - Operating in waves up to 3 metres
 - 33 seal visitors to the stationary boat
 - Investigations completed safely as planned
- **Star of the South** project team visited the proposed Port of Hastings development site.
- **Events:** The Trades Fit Expo, Gippsland Careers Network Industry Dinner Series – Sale, Wonthaggi and Moe, Latrobe City Industry Alliance, South Gippsland Bass Coast Career Expo - Korumburra
- **Presentations:** Officer Secondary College, Guest Lecturer at Melbourne Uni – Masters of Env. Class, Australian Energy Week 2023



What's coming up

- **Making the move to Offshore Wind** to be released 29 June
- **Local supply chain** capabilities and opportunities report
- **Ports assessment**
- **Events and presentations:**
 - 3rd Australian Offshore Wind Conference
 - SEC Energy Jobs and Skills Forum
 - Gippsland Tech School – Teacher presentation
 - Sale Catholic College – Pathways Expo
 - Australian Clean Energy Summit
 - BBLLEN - Job Skills Expo
 - Australian Wind Energy 2023
 - Gippsland Tech School – Science Week
 - Institute of Surveyors Victoria – Surveying Expo



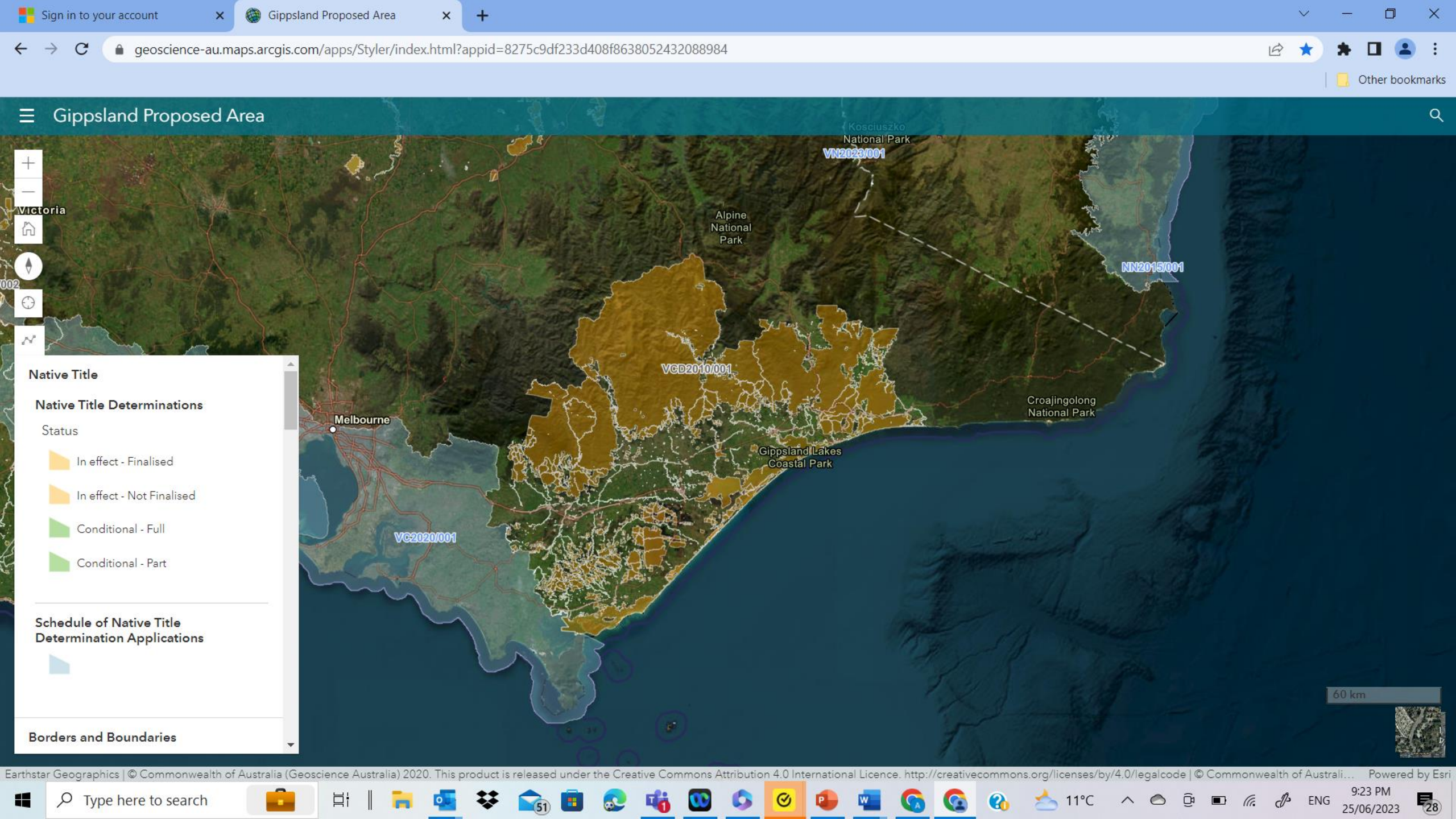


What's happening in the community:
GLaWAC – Renewable Energy Strategy



GLaWAC Renewable Energy

AN UPDATE FOR STAR OF THE SOUTH
COMMUNITY ADVISORY GROUP



GLaWAC's past and current activities working with renewable energy developers

Cultural awareness training

Meet and greets

Conference attendance and participation

Consultation on project proposals

EPBC Act and EES responses

Cultural Heritage Assessments

Technical Reference Groups

Community Advisory Groups / Stakeholder Liaison Groups

Establishing support networks - University of Melbourne, University of Technology Sydney, First Nations Clean Energy

Internal work - Renewable Energy Strategy

GLaWAC's Offshore Wind and Renewable Energy – Who's been in contact?

Orsted	SOTS	Marinus Link	GREZ
Blue Float	Corio Generation	Blue Marlin – Vena	Floatation Sea Dragon
Wooreen	Hazelwood Rehabilitation	Sea Dragon	Parkwind Blue Mackerel
Mistral Energy	Project Poseidon	GB Energy	Various Solar Farms
CarbonNet	Energy Australia	AGL	Engie
	DEECA / DTP	DCCEEW	

What's behind our renewable energy strategy

In response to the threat of climate change, the renewable energy transition is proceeding at a rapid pace. Gunaikurnai Country will continue to be a focus of energy generation and storage, onshore and offshore.

As the Traditional Owner Corporation for the Native Title holders of much of Gippsland, GLaWAC has been working with many organisations on the renewable energy transition on Gunaikurnai Country.

GLaWAC is keen to ensure that mob are well represented and that the rights and views of the Traditional Owners of Country are respected and understood through the transition.

GLaWAC is continuing to build capacity and working with our community to ensure we achieve the aspirations of the Gunaikurnai Whole of Country Plan.

The objectives of the strategy are the culmination of discussions, deliberations and project work within and outside GLaWAC.

Engagement with the Gunaikurnai and broader community will be ongoing and our strategy should be seen as “dynamic”.

GLaWAC looks forward to engaging with stakeholders to achieve these objectives for the Gunaikurnai.



Gunaikurnai Whole-of-Country Plan

GLaWAC's Renewable Energy Strategy

1

TO HAVE A STRONG, HEALTHY AND HAPPY MOB

- The Gunaikurnai Community have the information they need to understand the transition and can make informed decisions about seeking opportunities presented by it.
- The Gunaikurnai Community inform and guide GLaWAC decision making regarding renewable energy transition.

2

TO HEAL OUR COUNTRY

- Gunaikurnai have cultural responsibilities to protect and heal Country. Opportunities to protect and heal our living cultural landscapes, regardless of legislative requirements, are investigated and implemented, directed by GLaWAC.
- Impact, including cumulative impact, from renewable energy is accounted for when assessment processes for are implemented. Of particular concern to the Gunaikurnai regarding offshore wind are impacts to whales, seabirds, migratory birds and culturally significant species.
- GLaWAC direct development and delivery of landscape restoration requirements for damage to coastal environments and cultural sites.
- Gunaikurnai collaborate in monitoring and protecting biodiversity impacted by development and have access to that data.
- Emerging renewable energy technologies that have less environmental and visual impact are a part of the energy transition on Gunaikurnai Country. This may include wave energy devices.
- Country is returned to its previous natural state at the end of project life. Decommission planning and adequate rehabilitation bonds are required up front.

3

TO PROTECT AND PRACTICE OUR CULTURE

- Gunaikurnai tangible and intangible cultural heritage is protected and GLaWAC are resourced to effectively manage cultural heritage through the renewable energy transition.
- Gunaikurnai cultural heritage sites, especially Ancestors' resting places, are protected from any harm. Where there are further opportunities to protect these sites from harm outside project impacts - for example sea level rise or storm surge impacts - that with GLaWAC direction, proponents and the State undertake measures to protect these locations.
- Gunaikurnai are compensated for the loss of our cultural heritage when it is irreparably lost or damaged from development/works.
- GLaWAC are involved in submerged Aboriginal cultural heritage management including its surveying, documentation, research potential and protection, respecting Indigenous Data Sovereignty.
- Submerged Aboriginal cultural heritage is appropriately managed through legislation.

4

TO BE RESPECTED AS TRADITIONAL OWNERS OF OUR COUNTRY

- GLaWAC and the Gunaikurnai Community are embedded in processes that relate to management of Country including in Environment Effects Statements, Technical Reference Groups and other relevant processes.

5

TO HAVE THE RIGHT TO USE, MANAGE AND CONTROL OUR COUNTRY

- Our rights to access Country and use our natural resources are not impacted by the renewable energy transition. Formal processes that protect our rights, such as Native Title, are adhered to.

6

TO BE ECONOMICALLY INDEPENDENT

- Ongoing revenue provided to GLaWAC in trust for the Gunaikurnai Community.
- GLaWAC realise economic investment and passive income opportunities, which may include ownership, investment or leasing associated with renewable energy infrastructure.
- Grow GLaWAC business - GLaWAC is contracted to deliver works consistent with existing service offer and explore new service offer opportunities.
- Aboriginal businesses are empowered to respond to opportunities presented by the renewable energy transition.
- The transition creates jobs for our people, with focused initiatives to achieve this guided by GLaWAC.

7

A STRONG FOCUS ON LEARNING

- Gunaikurnai community are empowered to lead GLaWAC's work in renewable energy into the future.
- Gunaikurnai learns from, and shares with, other Traditional Owners.

1

TO HAVE A STRONG, HEALTHY AND HAPPY MOB

- The Gunaikurnai Community have the information they need to understand the transition and can make informed decisions about seeking opportunities presented by it.
- The Gunaikurnai Community inform and guide GLaWAC decision making regarding renewable energy transition.

TO HEAL OUR COUNTRY

- Gunaikurnai have cultural responsibilities to protect and heal Country. Opportunities to protect and heal our living cultural landscapes, regardless of legislative requirements, are investigated and implemented, directed by GLaWAC.
- Impact, including cumulative impact, from renewable energy is accounted for when assessment processes are implemented. Of particular concern to the Gunaikurnai regarding offshore wind are impacts to whales, seabirds, migratory birds and culturally significant species.
- GLaWAC direct development and delivery of landscape restoration requirements for damage to coastal environments and cultural sites.
- Gunaikurnai collaborate in monitoring and protecting biodiversity impacted by development and have access to that data.
- Emerging renewable energy technologies that have less environmental and visual impact are a part of the energy transition on Gunaikurnai Country. This may include wave energy devices.
- Country is returned to its previous natural state at the end of project life. Decommission planning and adequate rehabilitation bonds are required up front.

2

3

TO PROTECT AND PRACTICE OUR CULTURE

- Gunaikurnai tangible and intangible cultural heritage is protected and GLaWAC are resourced to effectively manage cultural heritage through the renewable energy transition.
- Gunaikurnai cultural heritage sites, especially Ancestors' resting places, are protected from any harm. Where there are further opportunities to protect these sites from harm outside project impacts – for example sea level rise or storm surge impacts – that with GLaWAC direction, proponents and the State undertake measures to protect these locations.
- Gunaikurnai are compensated for the loss of our cultural heritage when it is irreparably lost or damaged from development/works.
- GLaWAC are involved in submerged Aboriginal cultural heritage management including its surveying, documentation, research potential and protection, respecting Indigenous Data Sovereignty.
- Submerged Aboriginal cultural heritage is appropriately managed through legislation.

4

TO BE RESPECTED AS TRADITIONAL OWNERS OF OUR COUNTRY

- GLaWAC and the Gunaikurnai Community are embedded in processes that relate to management of Country including in Environment Effects Statements, Technical Reference Groups and other relevant processes.

6

TO BE ECONOMICALLY INDEPENDENT

- Ongoing revenue provided to GLaWAC in trust for the Gunaikurnai Community.
- GLaWAC realise economic investment and passive income opportunities, which may include ownership, investment or leasing associated with renewable energy infrastructure.
- Grow GLaWAC business – GLaWAC is contracted to deliver works consistent with existing service offer and explore new service offer opportunities.
- Aboriginal businesses are empowered to respond to opportunities presented by the renewable energy transition.
- The transition creates jobs for our people, with focused initiatives to achieve this guided by GLaWAC.

7

A STRONG FOCUS ON LEARNING

- Gunaikurnai community are empowered to lead GLaWAC's work in renewable energy into the future.
- Gunaikurnai learns from, and shares with, other Traditional Owners.

Further Information

<https://gunaikurnai.org/our-economy/renewables/>

<https://gunaikurnai.org/wp-content/uploads/2021/07/Gunaikurnai-Whole-of-Country-Plan-ONLINE.pdf>

What's happening in the community

- **Community updates**
 - Peter Mooney
 - Jack Winterbottom
- **Everyone**
 - What are you hearing?
 - What are the hot topics in your local area?

Would you like to give an update at the next meeting?



Share what's happening in your community

Other business

Other business

- Other questions and feedback?
- Suggestions for future agenda items?
 - List on the CAG Member Teams Page 'files'
 - Email/call Jason
- Next meeting – 24 August 2023

Forward meeting schedule

Date	Location	Topic (tentative, subject to change)
24 August	Port Welshpool	Workforce and supply chain report
5 October	Yarram	Marine environmental assessment update (including birds, marine mammals, seafloor ecology)
15 November	Foster / South Gippsland	Feasibility Licence outcomes and next steps. Potential for a Barry Beach site visit.
December (TBC)	TBC	Xmas breakup

Thank you for your participation