

Notice to Mariners

The following Notice to Mariners is published for general information.

Australia – Victoria

SOUTH GIPPSLAND – THE STAR OF THE SOUTH PROJECT SURVEY ACTIVITIES

The Star of the South Project is Australia's first proposed offshore wind project – located off the south coast of Gippsland near Port Albert.

We are preparing to undertake fish surveys as part of our environmental impact assessment studies. The intention of this notice is to give an overview of activities and vessels involved.

Notice issue date: 5 June 2020

Scheduled time / date of operation: 24 days survey activities between 9 June and 10 July

SOTS reference: 200605-SOTS-CTH-APP-NTM-Fish-Rev0

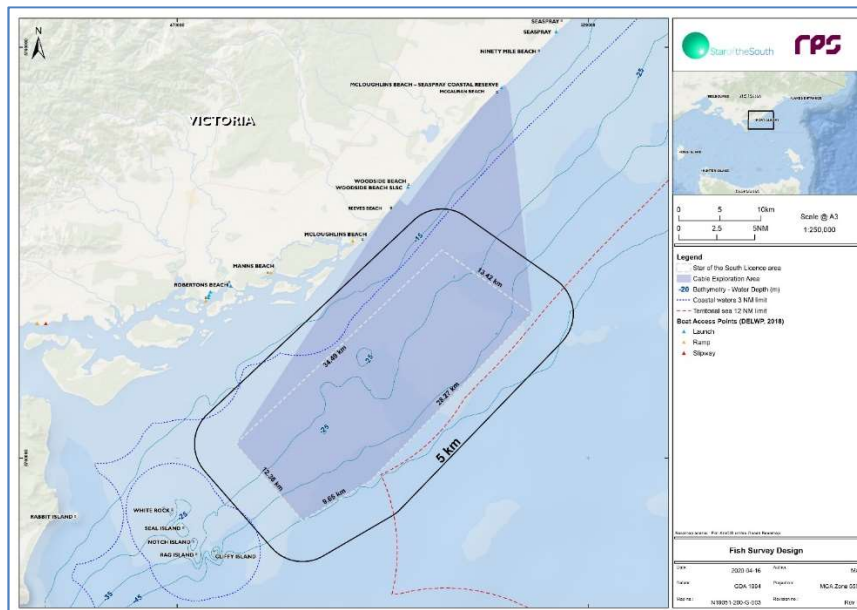
AUS charts and publications affected: AUS 357

General details:

Survey work to be carried out includes Baited remote underwater video camera deployments, scientific Danish seine fishing and scientific gillnet fishing.

Location: In area bounded by box drawn between points in table below (Licence Area and surrounds). No exclusion zones in force. Vessels will display lights and/or shapes indicating nature of their operations.

ID	Latitude	Longitude
NE	38° 26.668'S	147° 9.945'E
SE	38° 41.097'S	147° 16.618'E
SW	39° 0.266'S	146° 50.430'E
NW	38° 50.760'S	146° 37.446'E



Vessels and equipment:

Baited Remote Underwater Video Survey: Seapride MB833 XVV (UVI 432486)	
General descriptions	14.3 m fibreglass, forward wheelhouse multi-purpose vessel
Call sign	VKV 4443
MMSI	503099010
Mobile Phoned	0427 512 149 (Master)
Onshore Representative	Grant McConachy – 0428 512 456
Static Gear	Up to 8 BRUV units set at any one time. Buoy line with two white/orange surface floats per BRUV unit. Daytime operations only. Vessel remains in general area.



Gillnet Survey: FV Gabo Bay IL948 (UVI 450030)	
General descriptions	18.4 m aft-wheelhouse wooden fishing vessel
Call sign	VHS 6326
MMSI	
Mobile Phone	0448 403 176 (Master)
Onshore Representative	Wayne Cripps
Static Gear	Up to two demersal gillnets set at any one time with danbuoy at either end of net. Vessel remains in vicinity.



Danish Seine Survey: Nephelle UFM	
General descriptions	17.5 m aft-wheelhouse steel fishing vessel
Call sign	VKV 2522
MMSI	TBA
Mobile Phone	0428 524 357
Onshore Representative	Andy Watts
Static Gear	Danish seine net warp anchored at one end and marked with danbuoy, opposite warp connected to vessel.



General safety advice:

All vessels engaged in the fish survey activities will exhibit appropriate lights and shapes prescribed by the International Regulations for Preventing Collisions at Sea; relative to their operations. All vessels engaged in the activity will also transmit an Automatic Identification System (AIS) message.

MARINERS ARE ADVISED to navigate with caution in the vicinity of the fish surveys.

If you become entangled with our equipment or have an accident, contact emergency services and at the earliest convenience, please also notify the Star of the South Project on:

1800 340 340 or email info@starofthesouth.com.au